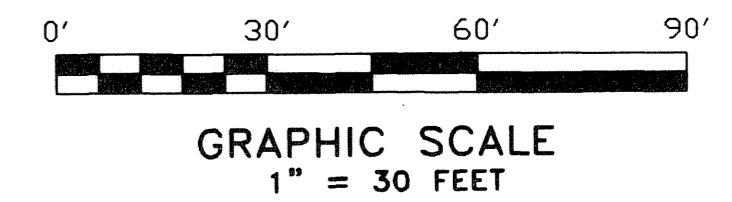


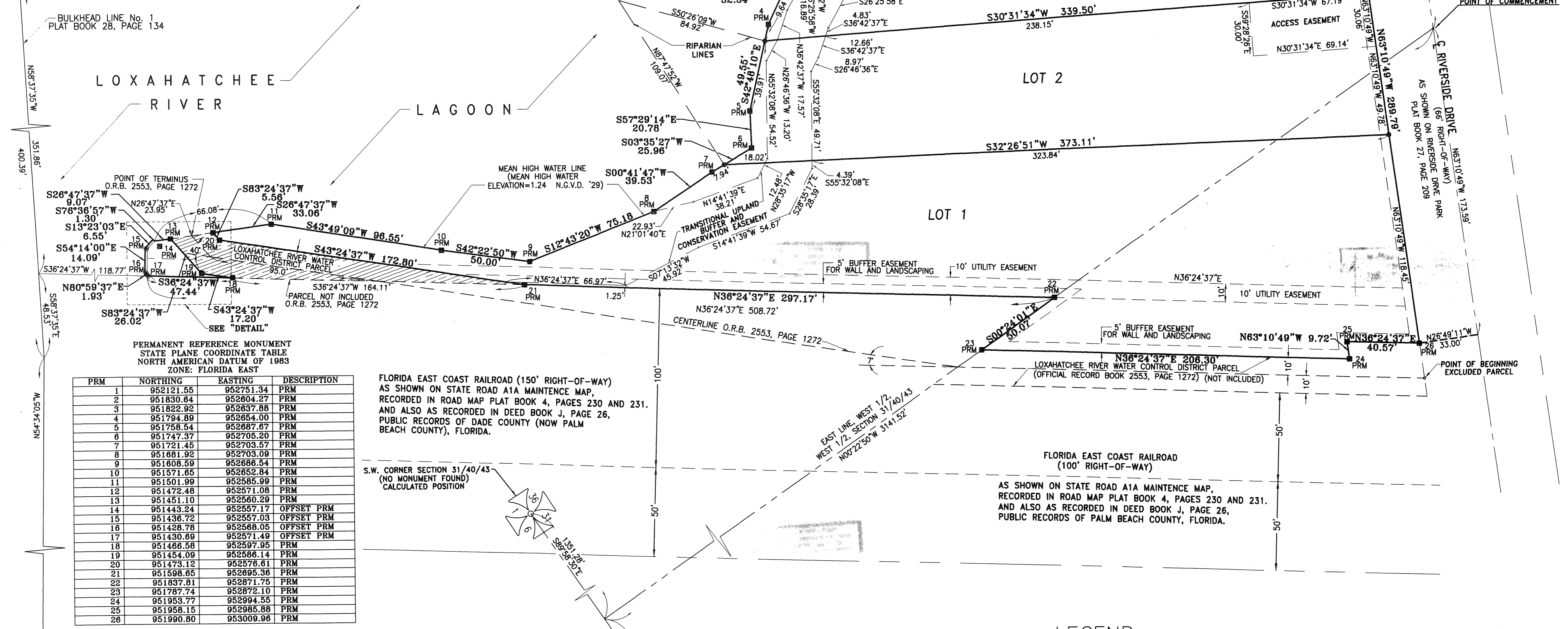
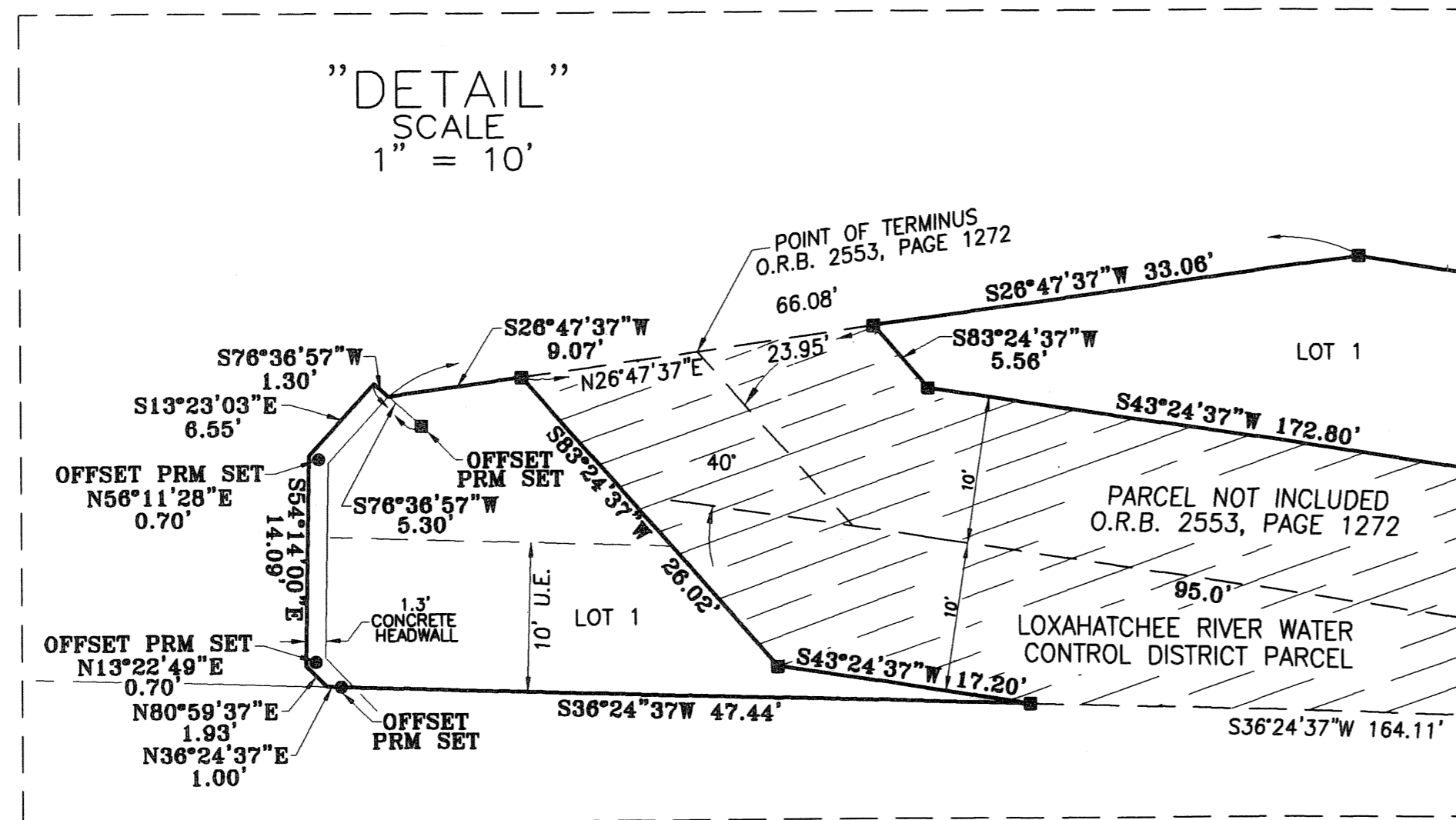
RIVER HAMMOCK

LYING IN SECTION 31, TOWNSHIP 40 SOUTH, RANGE 43 EAST,
TOWN OF JUPITER, COUNTY OF PALM BEACH, FLORIDA
AUGUST 2005 SHEET 2 OF 2



197

STATE OF FLORIDA
COUNTY OF PALM BEACH : SS
This Plat was filed for record at _____ day of _____, 2005, A.D. and duly recorded in Plat Book No. _____ on Pages _____ and _____
DOROTHY H. WILKEN, Clerk
By: _____ D.C.



PERMANENT REFERENCE MONUMENT
STATE PLANE COORDINATE TABLE
NORTH AMERICAN DATUM OF 1983
ZONE: FLORIDA EAST

PRM	NORTHING	EASTING	DESCRIPTION
1	952121.55	952751.34	PRM
2	951830.64	952604.27	PRM
3	951822.92	952637.88	PRM
4	951794.89	952654.00	PRM
5	951758.54	952687.87	PRM
6	951747.37	952705.20	PRM
7	951721.45	952703.57	PRM
8	951681.92	952703.09	PRM
9	951608.59	952686.54	PRM
10	951571.65	952652.84	PRM
11	951501.99	952585.99	PRM
12	951472.46	952571.08	PRM
13	951451.10	952560.29	PRM
14	951443.24	95257.17	OFFSET PRM
15	951436.72	95257.03	OFFSET PRM
16	951428.78	95258.05	OFFSET PRM
17	951430.89	952571.49	OFFSET PRM
18	951466.58	952597.95	PRM
19	951454.09	952566.14	PRM
20	951473.12	952576.61	PRM
21	951598.65	952695.36	PRM
22	951837.81	952871.75	PRM
23	951787.74	952872.10	PRM
24	951953.77	952994.55	PRM
25	951958.15	952985.88	PRM
26	951990.80	953009.98	PRM

FLORIDA EAST COAST RAILROAD (150' RIGHT-OF-WAY)
AS SHOWN ON STATE ROAD A1A MAINTENANCE MAP,
RECORDED IN ROAD MAP PLAT BOOK 4, PAGES 230 AND 231.
AND ALSO AS RECORDED IN DEED BOOK J, PAGE 26,
PUBLIC RECORDS OF DADE COUNTY (NOW PALM
BEACH COUNTY), FLORIDA.

S.W. CORNER SECTION 31/40/43
(NO MONUMENT FOUND)
CALCULATED POSITION

FLORIDA EAST COAST RAILROAD
(100' RIGHT-OF-WAY)
AS SHOWN ON STATE ROAD A1A MAINTENANCE MAP,
RECORDED IN ROAD MAP PLAT BOOK 4, PAGES 230 AND 231.
AND ALSO AS RECORDED IN DEED BOOK J, PAGE 26,
PUBLIC RECORDS OF PALM BEACH COUNTY, FLORIDA.

- LEGEND
- - INDICATES PERMANENT REFERENCE MONUMENT 4"x4" CONCRETE MONUMENT STAMPED "P.R.M. LS 3335"
 - - INDICATES 5/8" IRON ROD AND CAP STAMPED "LS 3335"
 - - INDICATES PERMANENT REFERENCE MONUMENT NAIL/DISK STAMPED "P.R.M. LS 3335"
 - PRM - PERMANENT REFERENCE MONUMENT
 - O.R.B. - OFFICIAL RECORD BOOK
 - U.E. - UTILITY EASEMENT

THIS INSTRUMENT WAS PREPARED BY RICHARD A. MIXON, IN AND FOR THE OFFICE OF MIXON LAND SURVEYING, INC. 311 WEST INDIANTOWN ROAD, SUITE 3, JUPITER, FLORIDA 33458

MIXON LAND SURVEYING, INC.
311 WEST INDIANTOWN ROAD, SUITE 3
JUPITER, FLORIDA 33458
(561) 747-6046
CERTIFICATE NO. LB 4199

RIVER HAMMOCK

JOB NO. 04-127 CADD FILE 04-127 DATE 09/04/04 SHEET 2 OF 2